



Focusing on:

Hauora
(well being)

Culturally Responsive
Practice

Transitions

Digital Fluency

To raise achievement for all students and address our achievement challenges

15th February 2019

Tēnā koutou katoa,

A warm welcome to Justin Neal, who joins us from Mahana School to take on the role of Principal of Appleby School. We are pleased to welcome you to our community, Justin. We also welcome all new staff to schools in our Community of Learning in 2019.

Congratulations to Craig Vercoe, who takes on the role of CEO of Nelson Tasman Kindergartens. We look forward to working with you again in 2019, Craig.

We would like to extend a huge thank you to Peter Verstappen and John Armstrong for the work they have put in to getting this Kāhui Ako up and running. The initial stages of forming a Community of Learning provide many challenges and they have demonstrated how a truly collaborative model of leadership can work, as well as leaving the Community of Learning in a good space to progress.

Across School Team 2019

We are pleased to be able introduce two new Across School Teachers to the team in 2019. Nic Walker (Appleby School) and Tania Alesana (Waimea Intermediate School) have joined our team for 2019-2020. Both have been in Within School CoL roles in 2018.

Nic is the Deputy Principal of Appleby School and brings to the team leadership experience in both education and public health.

Tania brings a wealth of experience, knowledge and connections to our Culturally Responsive Practice stream of work. We are delighted to have them both on the Across School Team.

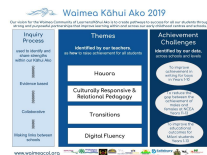
Sarah Rankin (Garin College), Gus Shirley (Waimea College) and Andrew Ricciardi (Waimea College) continue in their roles as Across School Teachers for 2019. Glenda Earle (Brightwater School) and Janine Higgins (Waimea Intermediate) also share one Across School Teacher role, as well as sharing the leadership role.

Quick Links

CoL Website



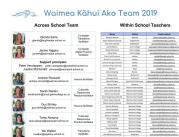
Vision



Strategic Plan



CoL Team



2019 Dates



Within School Teachers

We currently have 33 Within School Teachers in our Community of Learning (some positions are shared). They met this week to clarify their roles in their schools, to make links across our schools and to join with others to plan an inquiry/initiative they will be trialling this year, with the aim of improving outcomes for students who are not currently finding success in our school system.

Expert Partner

We are pleased to be working with Dr Camilla Highfield, from Auckland University, for the beginning of 2019. Camilla worked with our Across School Team at our planning day in January, and with our Within School Team at their hui this week. Camilla has recently been promoted to the role of Associate Dean at the University. We congratulate her in this appointment and value the expertise she brings to our Kāhui Ako.

Connect Week: 18th-22nd March 2019

Connect Week provides teachers and leaders in our schools with the opportunity to learn and network. The theme of this term's Connect Week is 'Digital Fluency'.

We ask principals to remove a staff meeting from their schedule in Week 8 so that Connect Week doesn't add to teacher workload.

Netsafe NZ will be running a Netsafe Event on Monday 18th March at Annesbrook Church, as part of Connect Week. Details of workshops for school leaders, teachers and parents are outlined below.

| School Leaders 1:15-3:15 pm | Teachers 3:45-5:30 pm | Parents 7:00-8:00 pm |
|--|--|---|
| <p>Learning and Leading in a Changing Landscape – a whole school approach to digital citizenship, online safety and wellbeing. 120 mins</p> <p>Schools are increasingly challenged by the complexities of preparing young people for the digital world. This session will explore seven key areas for strategic oversight of digital citizenship/online safety preparation and begin to use these to review current practices.</p> <p>This is an opportunity for leaders and teachers to unpack and use Netsafe's 'Digital Citizenship Capability Review Tool' and understand how this can be used to support schools to develop shared understandings around digital citizenship, prioritise what's on top, and plan for next steps.</p> | <p>Keeping it simple at the coalface – developing online safety, digital citizenship and wellbeing in the classroom 90 mins</p> <p>One in four young people experience online challenges and whānau often look to the school for guidance. Schools need to offer safe digital spaces. We want to help our students to become citizens in our digital world; safe and effective use of technologies is best done in the context of powerful learning.</p> <p>This interactive session will surface some of the challenges and opportunities for young people the online world provides and look at ways to develop 'digital' capabilities effectively across the curriculum. The session will offer a practical, familiar approach to inform curriculum planning in your school.</p> | <p>Powerful Partnerships – working together to support young people as they navigate the online world. 50 mins.</p> <p>Online safety for parents/whānau is more important than ever. As young people begin to spend more time online, it's important that parents start to teach them how to stay safe. So, how do you get started?</p> <p>This session will look at how parents/ whānau can support and enable children and young people to navigate online opportunities, challenges and complexities.</p> |

There will also be a range of workshops offered Tuesday, Wednesday and Thursday afternoons of Connect Week, around using digital tools to support and enhance learning. Teachers can choose to attend one or more of the workshops offered by Netsafe, CORE Ed facilitators and teachers, during that week.

Poutama Pounamu

6 schools are participating in this professional development. It began with a hui in Christchurch in November, and each school involved will work through online modules/professional learning over the next 18 months.

Early Childhood Education Centres

We have a memorandum of agreement with the Early Childhood Educational Centres associated with our Community of Learning. This memorandum of agreement has been completed and we will be circulating this to all schools and centres to sign.

Website

We continue to regularly update our website with information, dates and initiatives happening in our schools.

www.waimeacol.org

Our Waimea Kāhui Ako and the wider community have been through, and continue to go through some challenging and difficult times as a result of the Pigeon Valley fire. We wish your individual schools our best wishes over the coming weeks. We all have students and families directly or indirectly affected by the fire, highlighting the need to focus on the well-being of our students and their families. We also acknowledge the most amazing job that our firefighters and emergency staff have done and continue to do. Many of these people are also within our community.

Ngā mihi nui,

Glenda Earle glenda@brightwater.school.nz

Janine Higgins janineh@waimeaint.school.nz

Co-leaders

Waimea Community of Learning

Waimea Kāhui Ako

